

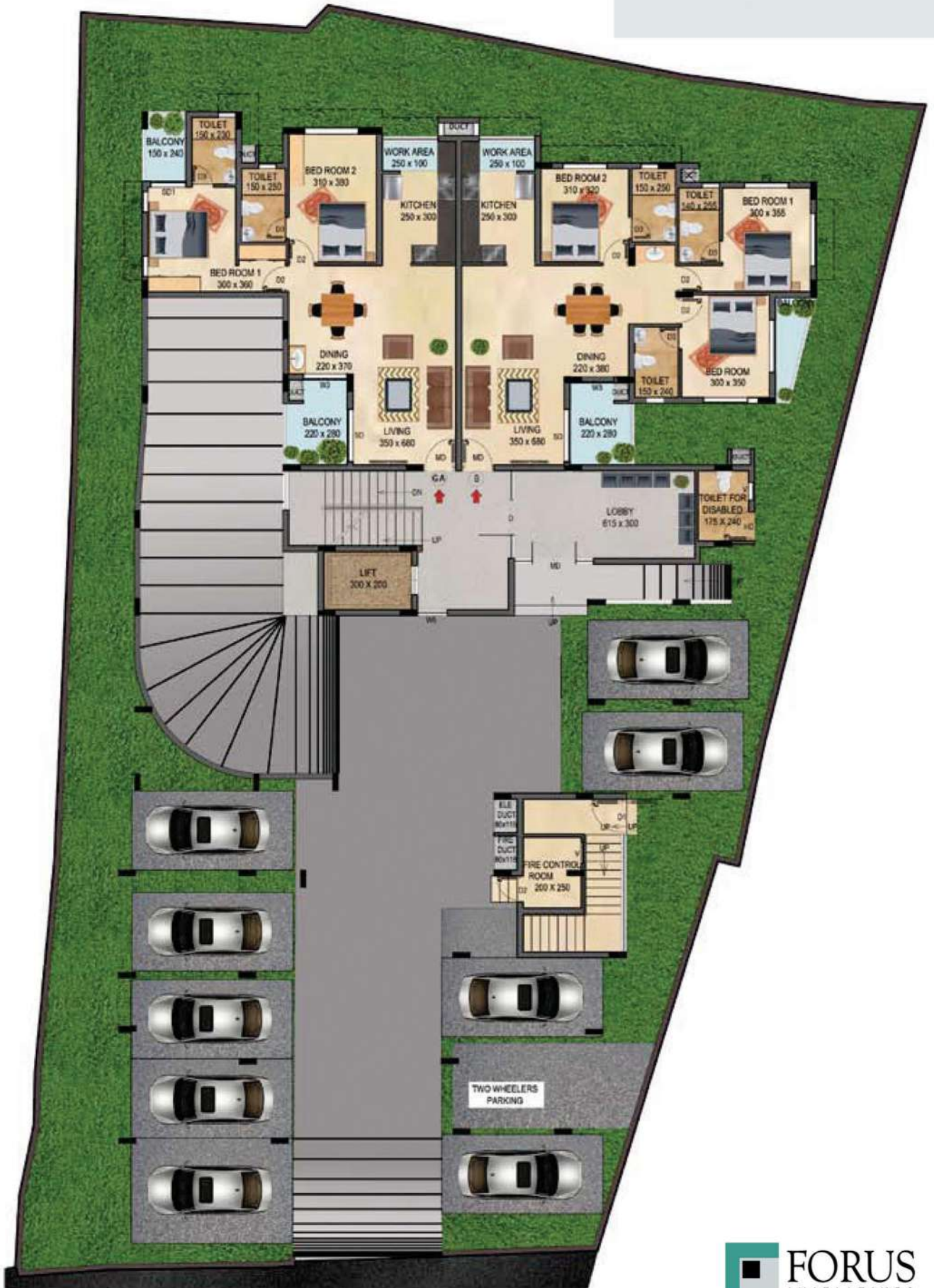
FORUS
Paramount
AMBAKKADAN JUNCTION, THRISSUR



GROUND FLOOR PLAN



FORUS
Paramount
AMBAKKADAN JUNCTION, THRISSUR



TYPICAL FLOOR PLAN-1 TO 4



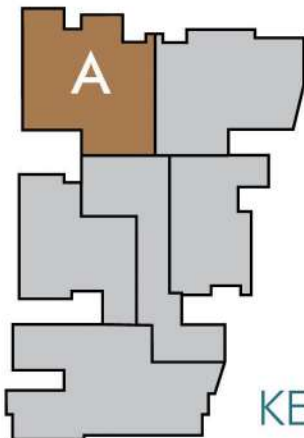
FORUS
Paramount
AMBAKKADAN JUNCTION, THRISSUR



TYPICAL FLOOR PLAN-A
 SALEABLE AREA-1485 SQFT



FORUS
Paramount
 AMBAKADAN JUNCTION, THRISSUR

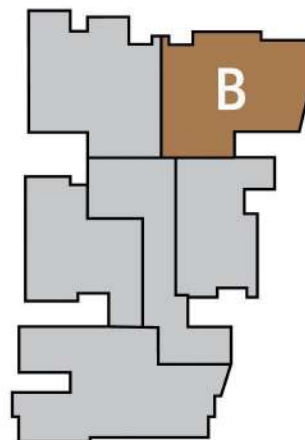


KEY PLAN

TYPICAL FLOOR PLAN-B
 SALEABLE AREA-1444 SQFT



KEY PLAN



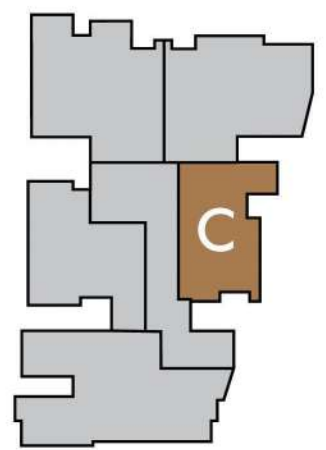
TYPICAL FLOOR PLAN-C
 SALEABLE AREA-994 SQFT



FORUS
Paramount
 AMBAKKADAN JUNCTION, THRISSUR



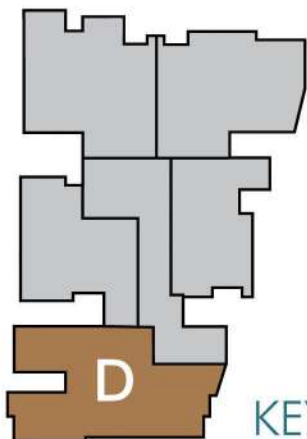
KEY PLAN



TYPICAL FLOOR PLAN-D
 SALEABLE AREA-1701 SQFT



FORUS
Paramount
 AMBAKKADAN JUNCTION, THRISSUR

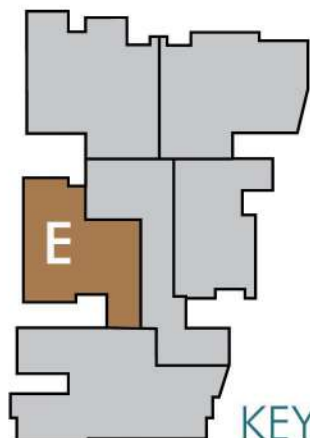
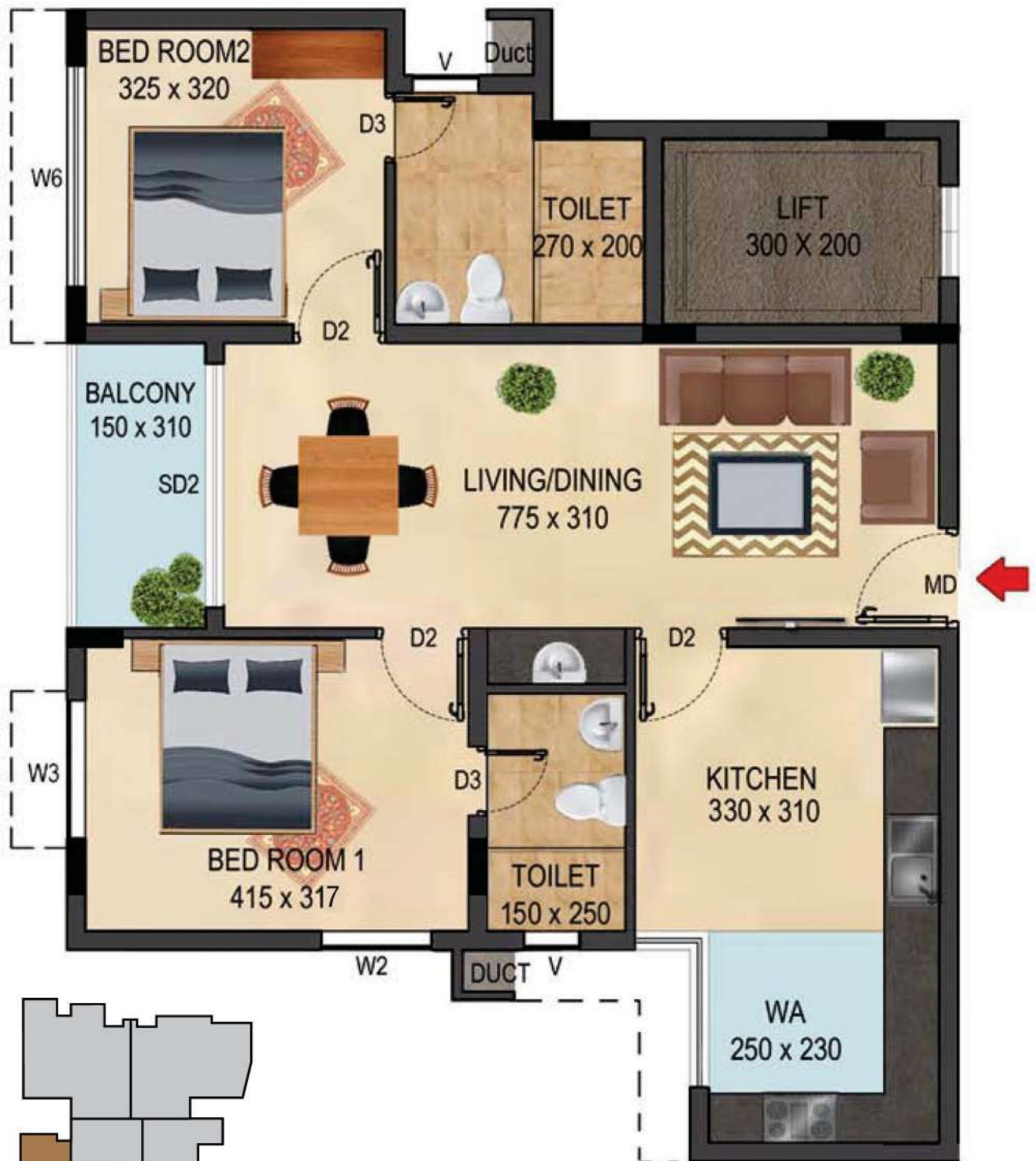


KEY PLAN

TYPICAL FLOOR PLAN-E
SALEABLE AREA-1187 SQFT



FORUS
Paramount
AMBAKKADAN JUNCTION, THRISSUR

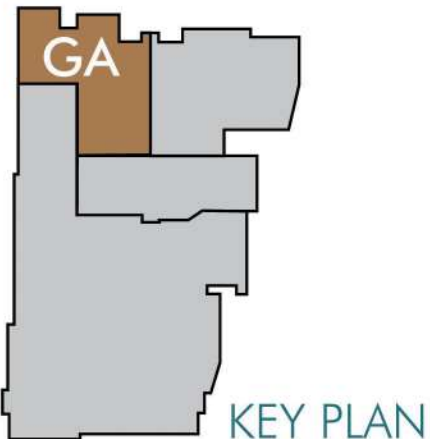
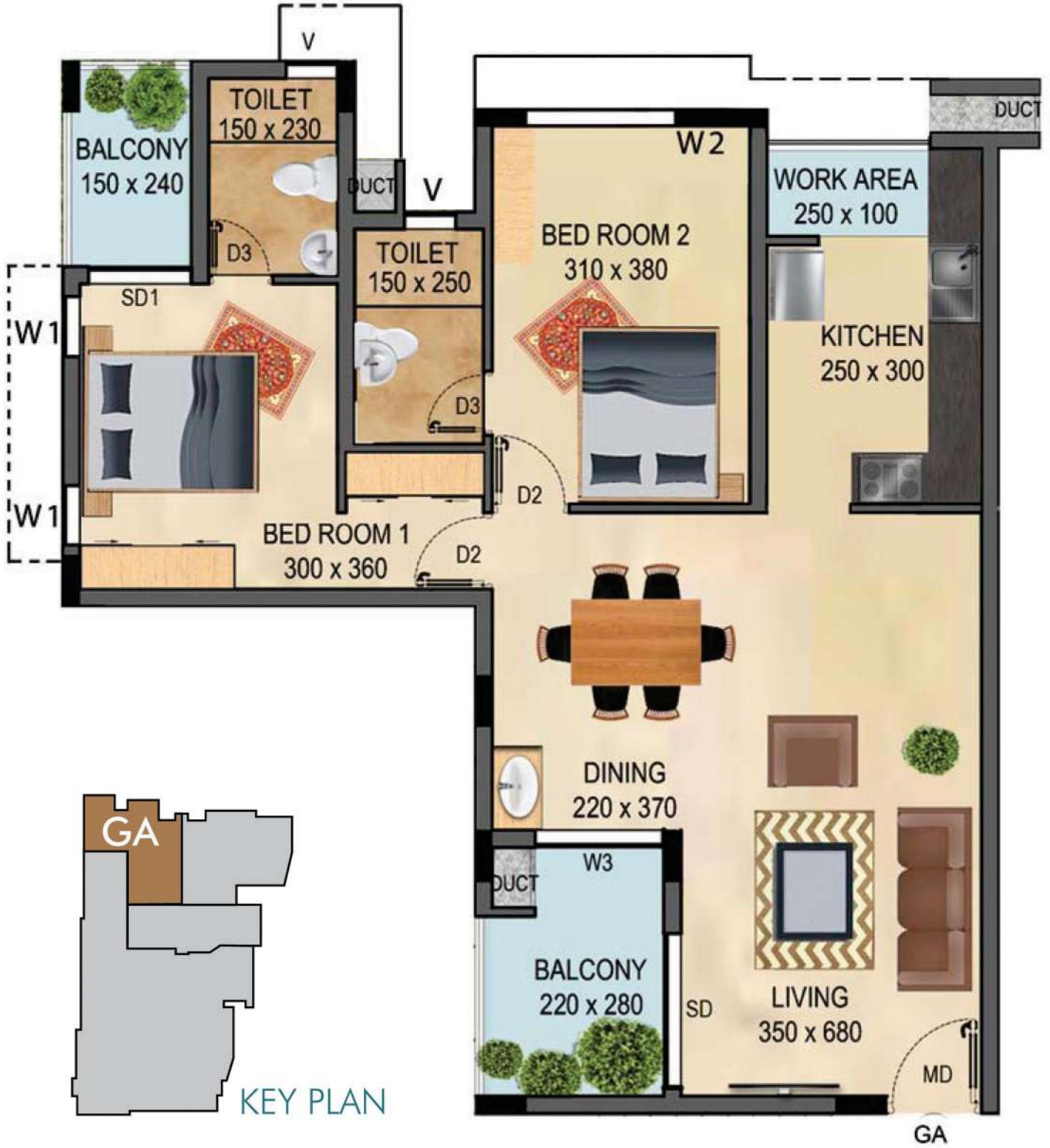


KEY PLAN

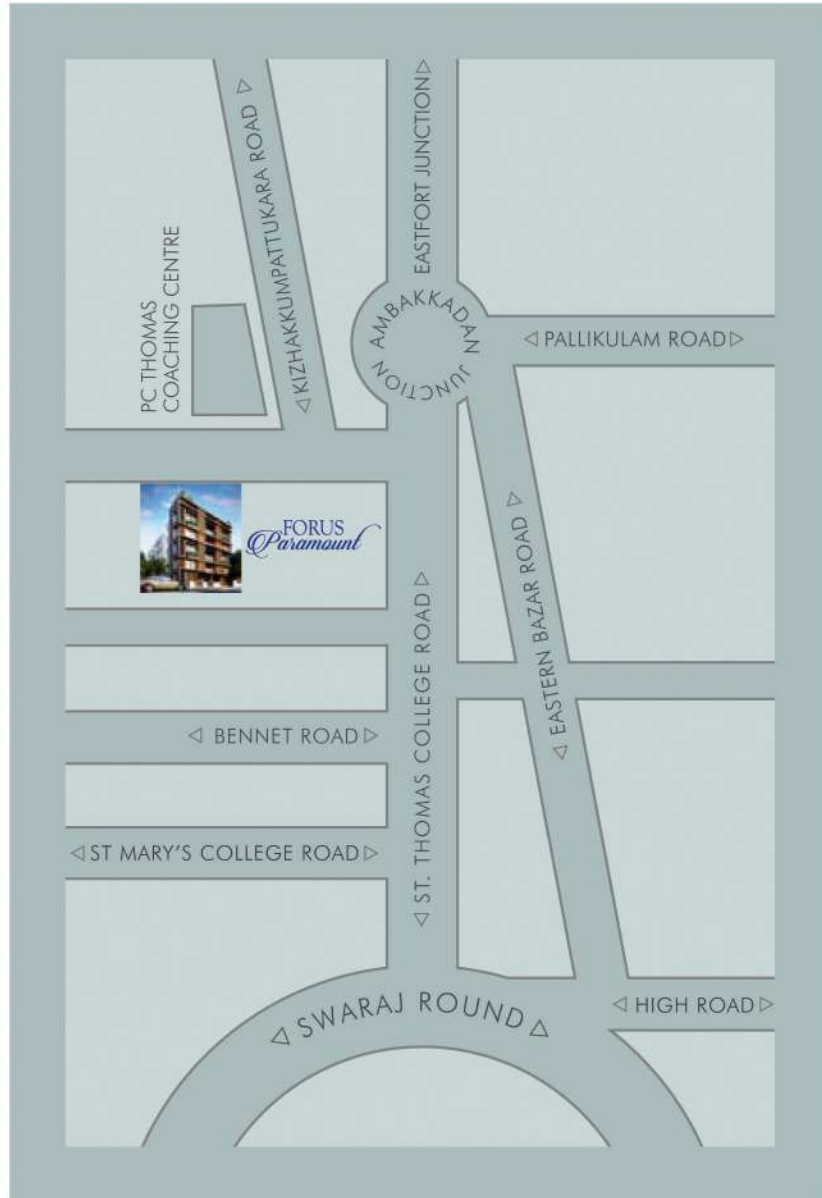
TYPICAL FLOOR PLAN-GA
 SALEABLE AREA-1261 SQFT



FORUS
Paramount
 AMBAKKADAN JUNCTION, THRISSUR



LOCATION



FORUS TOWN HOUSE, SANTHI LANE, CHEMBUKAVU, THRISSUR-680020, KERALA, INDIA
Ph: 0091 487 2325315, 0091 9447254520, 0091 8086494949
e-mail: forusini@gmail.com, www.forusbuilders.com

